

INTRODUCTION

The Encapsulated MOV (eMOV) Series is ideal for SMT processing and Pick and Place assembly. Its low-profile package offers space savings compared to leaded devices. These encapsulated components can withstand higher surge energies (up to 1200A) than MLVs. They are available in standard EIA sizes of 2825 and 4032 packages. The construction is RoHS compliant and the coating is UL94-V0 rated. They are available with maximum continuous operating voltages (MCOV) ranging from 11VAC to 680VAC.

STYLE DESIGNATION

The Maida Style Number is the typical means to identify our components when ordered. The style number identifies several parameters that are important for the characteristics of the device. An alternative ordering method, if known, is by our Item Number.

The following example is the standard part numbering system when ordering our Encapsulated MOV Series components by the Maida Style Number:

STANDARD MARKING

Minimum marking shall consist of an abbreviated style designation and, when space is available, the manufacturer's initials or company logo.

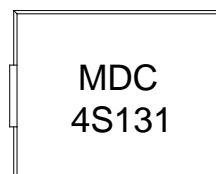
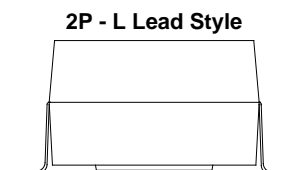
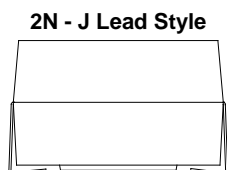
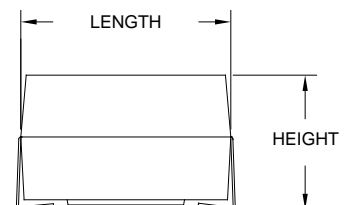
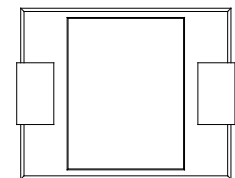
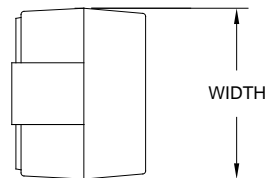
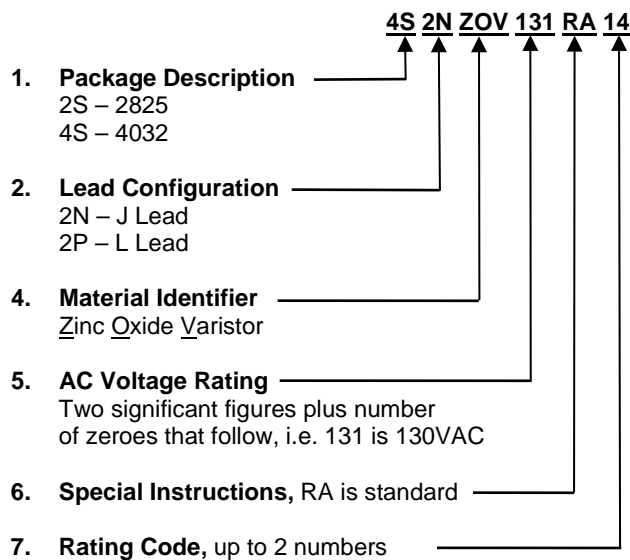
Example
MDC
4S131UL

Where:

MDC - Company Initials
4S - Package Description
131 - AC Voltage rating (130VAC)
UL - UL recognition, if applicable

A manufacturing date code and/or special markings may be available upon request.

Other safety agency designations are included where applicable.



ENCAPSULATED MOV SERIES

ELECTRICAL SPECIFICATIONS

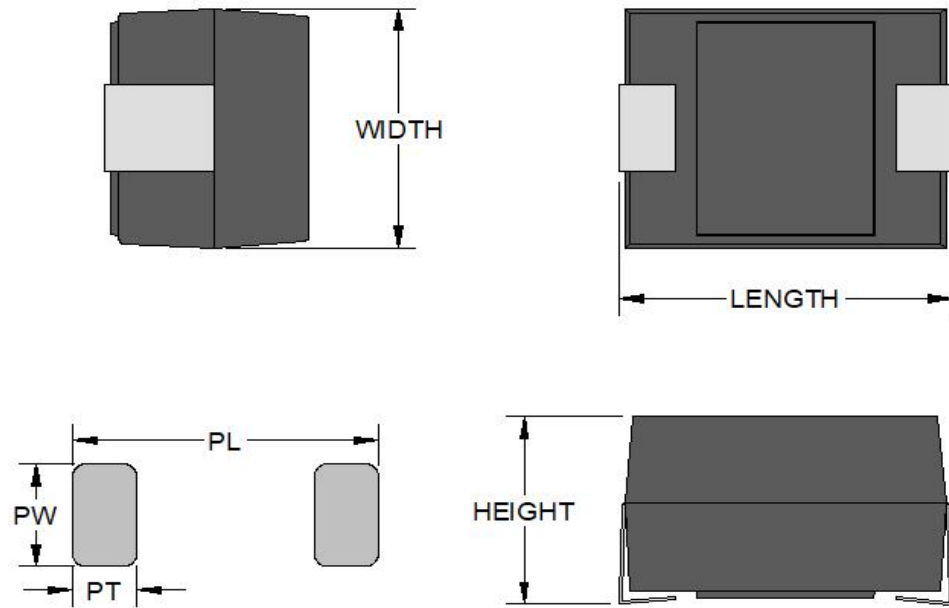
Maida Style Number	Recognitions To Safety Agency Standards						Nominal Size (mm)	Minimum Marking	Maximum Ratings						Electrical Characteristics				
									Applied Voltage		Energy		Peak Current		Varistor Voltage @ 1 mA DC		Max Clamping Voltage (@ Test Current)		Typical Cap.
													# Pulses						
									(AC) (DC)		(J) (J)		8 x 20 μ sec		(V) (V)		(V) (A)		1 V rms @ 1kHz
													10 x 1000 μ sec						
A	B	C	D	E	F	(mm)						Vmin	Vmax	(V)	(A)	(pF)			
2S2NZOV110RA00	X	X				5	2S110	11	14	0.6	0.6	250	125	16	20	40	1	2200	
4S2NZOV110RA01	X	X				7	4S110	11	14	1.1	1.1	500	250	16	20	36	2	3500	
2S2NZOV140RA00	X	X				5	2S140	14	18	0.7	0.7	250	125	20	24	48	1	2000	
4S2NZOV140RA01	X	X				7	4S140	14	18	1.3	1.3	500	250	20	24	43	2	2800	
2S2NZOV170RA00	X	X				5	2S170	17	22	0.9	0.9	250	125	24	30	60	1	1600	
4S2NZOV170RA01	X	X				7	4S170	17	22	1.6	1.6	500	250	24	30	53	2	2000	
2S2NZOV200RA00	X	X				5	2S200	20	26	1.1	1.1	250	125	30	36	73	1	1700	
4S2NZOV200RA01	X	X				7	4S200	20	26	2	2	500	250	30	36	65	2	3600	
2S2NZOV250RA01	X	X				5	2S250	25	31	1.2	1.2	250	125	35	43	86	1	1400	
4S2NZOV250RA02	X	X				7	4S250	25	31	2.4	2.4	500	250	35	43	77	2	3060	
2S2NZOV300RA01	X	X				5	2S300	30	38	1.5	1.5	250	125	42	52	99	1	1175	
4S2NZOV300RA02	X	X				7	4S300	30	38	2.8	2.8	500	250	42	52	93	2	2540	
2S2NZOV350RA01	X	X				5	2S350	35	45	1.8	1.8	250	125	50	62	117	1	990	
4S2NZOV350RA02	X	X				7	4S350	35	45	3.4	3.4	500	250	50	62	110	2	2130	
2S2NZOV400RA01	X	X				5	2S400	40	56	2.2	2.2	250	125	61	75	138	1	440	
4S2NZOV400RA03	X	X				7	4S400	40	56	5.2	5.2	500	250	61	75	135	2	945	
2S2NZOV500RA01	X	X				5	2S500	50	66	3.5	3.5	800	600	74	90	163	5	360	
4S2NZOV500RA02	X	X				7	4S500	50	66	7	7	1750	1250	74	90	157	10	770	
2S2NZOV600RA01	X	X				5	2S600	60	81	4.5	4.5	800	600	90	110	190	5	300	
4S2NZOV600RA02	X	X				7	4S600	60	81	9	9	1750	1250	90	110	180	10	630	
2S2NZOV750RA01	X	X				5	2S750	75	102	5.5	5.5	800	600	108	132	220	5	250	
4S2NZOV750RA02	X	X				7	4S750	75	102	11	11	1750	1250	108	132	220	10	520	
2S2NZOV950RA01	X	X				5	2S950	95	127	6.6	6.6	800	600	135	165	240	5	200	
4S2NZOV950RA02	X	X				7	4S950	95	127	13	13	1750	1250	135	165	255	10	420	
2S2NZOV121RA02	X	X				5	2S121	120	160	8	8	800	600	170	207	310	5	120	
4S2NZOV121RA03	X	X				7	4S121	120	160	16	16	1750	1250	170	207	320	10	250	
2S2NZOV131RA02	X	X				5	2S131	130	175	8.5	8.5	800	600	184	224	350	5	120	
4S2NZOV131RA03	X	X				7	4S131	130	175	17.5	17.5	1750	1250	184	224	340	10	250	
2S2NZOV141RA02	X	X				5	2S141	140	180	9	9	800	600	198	242	380	5	110	
4S2NZOV141RA03	X	X				7	4S141	140	180	20	20	1750	1250	198	242	360	10	230	
2S2NZOV151RA02	X	X				5	2S151	150	200	10.5	10.5	800	600	212	259	430	5	100	
4S2NZOV151RA03	X	X				7	4S151	150	200	21	21	1750	1250	212	259	395	10	210	
2S2NZOV181RA02	X	X				5	2S181	180	230	11	11	800	600	255	311	510	5	90	
4S2NZOV181RA03	X	X				7	4S181	180	230	24	24	1750	1250	255	311	445	10	180	
2S2NZOV211RA07	X	X				5	2S211	210	270	13	13	800	600	297	363	545	5	74	
4S2NZOV211RA18	X	X				7	4S211	210	270	28	28	1750	1250	297	363	545	10	150	
2S2NZOV231RA08	X	X				5	2S231	230	300	16	16	800	600	326	397	595	5	68	
4S2NZOV231RA20	X	X				7	4S231	230	300	32	32	1750	1250	326	397	595	10	140	
2S2NZOV251RA08	X	X				5	2S251	250	330	17	17	800	600	354	432	675	5	62	
4S2NZOV251RA21	X	X				7	4S251	250	330	35	35	1750	1250	354	432	650	10	130	
2S2NZOV271RA09	X	X				5	2S271	270	360	20	20	800	600	382	466	740	5	58	
4S2NZOV271RA23	X	X				7	4S271	270	360	40	40	1750	1250	382	466	710	10	120	
2S2NZOV301RA10	X	X				5	2S301	300	390	21	21	800	600	425	518	810	5	52	
4S2NZOV301RA25	X	X				7	4S301	300	390	42	42	1750	1250	425	518	790	10	110	
4S2NZOV321RA27	X	X				7	4S321	320	420	46	46	1750	1250	453	553	850	10	100	
4S2NZOV361RA28	X	X				7	4S361	360	470	47	47	1750	1250	522	638	960	10	88	
4S2NZOV391RA29	X	X				7	4S391	390	500	51	51	1750	1250	552	674	1040	10	83	
4S2NZOV421RA30	X	X				7	4S421	420	560	57	57	1750	1250	594	725	1120	10	77	
4S2NZOV461RA33	X	X				7	4S461	460	615	65	65	1750	1250	651	795	1240	10	72	
4S2NZOV481RA35	X	X				7	4S481	480	640	66	66	1750	1250	679	829	1300	10	70	
4S2NZOV511RA42	X	X				7	4S511	510	675	42	42	1750	1250	722	881	1350	10	62	
4S2NZOV551RA43	X	X				7	4S551	550	700	43	43	1750	1250	778	950	1400	10	72	
4S2NZOV581RA38	X	X				7	4S581	580	725	78	78	1750	1250	821	1002	1500	10	58	
4S2NZOV621RA40	X	X				7	4S621	620	800	82	82	1750	1250	877	1071	1650	10	55	
4S2NZOV681RA42	X	X				7	4S681	680	860	88	88	1750	1250	962	1175	1800	10	50	

A = UL1449 D = VDE
 B = cUL E = DEMKO
 C = CSA F =

eMOV SERIES

MECHANICAL SPECIFICATIONS

Style	Length (L)	Width (W)	MAX. Height (H)	Recommended Land Pad Length (PL)	Recommended Land Pad Width (PW)	Recommended Land Pad Thickness (PT)
2S Series	0.280"±0.010"	0.250"±0.010"	0.158"	0.331"	0.138"	0.098"
4S Series	0.402"±0.010"	0.327"±0.010"	0.256"	0.476"	0.138"	0.118"



Recommended Reflow Profile

